

Wall Mount RTD Probes

Temperature sensor:

Standard:

Pt100, Class A.
(Higher grades available).
Others:
Pt500, Pt1000, Duplex, etc.

Probe:

Diameters from 3mm.
Mineral insulated optional.
Fast response tip.

Terminal heads:

Cast alloy.
PVC conduit box.

RTD transmitters:

A range of in-head transmitters are available.
Non-Isolated (XU2HN), Add \$98.00
Isolated (XU2HI), Add \$198.00



WMR-AL

www.intech.co.nz/wmr

Wall mount Pt100 probes. Stock probes. Others by request.		
CODE	DESCRIPTION	PRICE
WMR-CB	Wall mount pvc conduit box probe. Probe: 6.4 x 100mm 316 Stainless steel. Head: PVC. IP44. Temp: min/max of probe: -20/80°C.	\$84.00
WMR-AL	Wall mount alloy head probe. Probe: 6.4 x 100mm 316 Stainless steel. Head: Cast alloy. IP67. Temp: min/max of probe: -40/110°C.	\$135.00

Jumo VIBROtemp - Screw-in Pt100 sensors with connector

Shockproof screw-in Pt100 sensors enable temperature measurement under pressure in motors, compressors, plant engineering and in ship building. Lloyd Application Category D Characteristic 2. The connection between the protection fitting and the connecting cable incorporates a locking system and has IP65 or IP69K protection rating when assembled.

The measuring insert is normally fitted with a Pt100 temperature sensor.

- ◆ For temperatures from -50 to +300°C.
- ◆ Highly resistant to shock and vibration.
- ◆ Connector locked in for reliable contact, IP65 or IP69K protection.

www.intech.co.nz/vibrotemp



902040/10

902040/15

MODEL	DESCRIPTION	PRICE
902040/10	Pt100 RTD with AMP Plug connector. Two threads 1/2" BSP and 1/8"-27 NPT (specify when ordering).	\$205.00
902040/15	Pt100 RTD with Bayonet connector 1/8".	\$205.00
Accessories		
00308880	Cable Silicone for 902040/10.	\$78.00
00439715	Cable 6 part Din Bayonet for 902040/15.	\$40.00

Resistance to temperature table for Pt100 elements.

Platinum resistance at 0°C - 100 ohms.

Temp coefficient - 0.00385 ohms/ohm/°C.

°C	ohms	°C	ohms	°C	ohms	°C	ohms	°C	ohms	°C	ohms	°C	ohms
-200	18.49	-100	60.25	0	100.00	100	138.50	200	175.84	300	212.02	400	247.04
-190	22.80	-90	64.30	10	103.90	110	142.29	210	179.51	310	215.57	410	250.48
-180	27.08	-80	68.33	20	107.79	120	146.06	220	183.17	320	219.12	420	253.90
-170	31.32	-70	72.33	30	111.67	130	149.82	230	186.82	330	222.65	430	257.32
-160	35.53	-60	76.33	40	115.54	140	153.58	240	190.45	340	226.17	440	260.72
-150	39.71	-50	80.31	50	119.40	150	157.31	250	194.07	350	229.67	450	264.11
-140	43.87	-40	84.27	60	123.24	160	161.04	260	197.69	360	233.17	460	267.49
-130	48.00	-30	88.22	70	127.07	170	164.76	270	201.29	370	236.65	470	270.86
-120	52.11	-20	92.16	80	130.89	180	168.46	280	204.88	380	240.13	480	274.22
-110	56.19	-10	96.09	90	134.70	190	172.16	290	208.45	390	243.59	490	277.56
-100	60.25	0	100.0	100	138.50	200	175.84	300	212.02	400	247.04	500	280.90

Temperature probe catalogue available on request.

pH Transmitter / Controller

JUMO

JUMO AQUIS 500 pH

- ◆ Graphics display with background lighting.
- ◆ Simple menu guided 3 point calibration.
- ◆ Full PID controller functionality.
- ◆ Basic unit with 1x analogue (4~20mA / 0~10V) output.
- ◆ High End Model with 2x analogue outputs and 2x changeover 3A, 250Vac relay outputs.
- ◆ Surface mountable housing.
- ◆ Power Supply: Standard, 20~30Vac/dc. Optional, 12~24Vdc ±15%.
- ◆ JUMO Datasheet: 20.2560

MODEL	DESCRIPTION	PRICE
AQUIS 500 pH	pH Tx/Controller with 1 x Analogue output, 20~30Vac/dc.	\$1200.00
AQUIS 500 pH-2A	pH Tx/Controller with 2 x Analogue outputs, 2x Relay outputs 20~30Vac/dc.	\$1750.00

www.intech.co.nz/aquis500ph



AQUIS 500 pH

tecLine pH single-rod electrodes

JUMO tecLine electrodes are high-quality combination sensors for professional applications in process and industrial measurement technology. A temperature probe can also be integrated as an option, depending on the type.

Suitable versions are available to meet a wide variety of requirements:

- for industrial and communal water and wastewater engineering
- for measurements in suspensions and varnishes

Other versions available (see data sheet / web link)

- ◆ JUMO Datasheet: 20.1020

JUMO tecLine sensors are state-of-the-art for modern pH and redox electrodes. Each electrode is a quality product and is individually tested as a matter of routine. All standard electrodes are made from FDA-listed materials.

MODEL	DESCRIPTION	PRICE
tecLine	<i>For standard applications.</i> 201020/51-10 Glass shaft, gel-sealed, zirconium dioxide diaphragm, screw cap, 120mm, salt reserve. (P/N: 00300151).	\$408.00
tecLine COAX	5m coaxial cable for Tecline pH probe. (P/N: 00082673).	\$130.00

www.intech.co.nz/tecline



tecLine

pH Probe Holders Immersion Fittings

Immersion fittings are used for holding electrochemical sensors.

The fittings are mounted in open sluices or containers. They protect the installed sensor from breaking and enable measurement in different immersion depths.

JUMO Datasheet: 20.2820

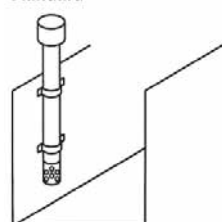
MODEL	DESCRIPTION	PRICES from
PHIF-40	Polypropylene (FPM seals), 500~2000mm lengths.	\$320.00 to \$540.00
PHIF-63	Polypropylene (FPM seals), 500~2000mm lengths. For 1~3 sensors.	\$1125.00 to \$1620.00

www.intech.co.nz/phif

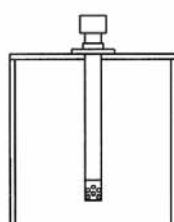


Installation options

Standard

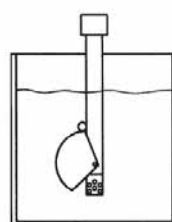


Fixing with pipe clips in the inlet channel

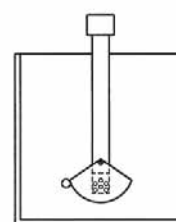


Fixing with a flange on a container

Use of a wetting cup



with the container filled



with empty container (residual liquid in the cup prevents the sensor from running dry)

Conductivity

JUMO



Lf03

ecoTRANS Lf 03

Transmitter / Switching Device for Conductivity

For connecting conductance sensors in two-electrode technology.
 Display units $\mu\text{S/cm}$, mS/cm , $\text{k}\Omega \times \text{cm}$, $\text{M}\Omega \times \text{cm}$, $\mu\text{mho/cm}$, mmho/cm .
 Two actual value outputs for conductivity and process temperature.
 Switching output.
 USP switching function according to USP<645>.
 Selectable temperature compensation natural water EN 27 888, ASTM D 1125-95, linear.
 Three-way disconnection (input, output, and voltage supply are galvanically isolated from each other).
 DIN-rail mounting.
 Delivery includes calibration certificate.
 JUMO Datasheet: 20.2732

www.intech.co.nz/lf03

MODEL	DESCRIPTION	PRICE
ecoTRANS Lf 03	Two analogue outputs and one relay output.	\$998.00

JUMO AQUIS 500 CR

Transmitter / Controller for Conductivity



AQUIS 500 CR

Automatic temperature compensation.
 Large LC graphics display with background lighting.
 Choice of display: large numbers, bar graph or trend display.
 Calibration options according to measured variable: cell constant and temperature coefficient.
 Calibration logbook.
 Two-electrode cells (as standard) or four-electrode cells can be connected.
 Pollution detection can be activated.
 Auto-range operation.
 Surface mounting housing (IP67).
 JUMO Datasheet: 20.2565

www.intech.co.nz/aquis500cr

MODEL	DESCRIPTION	PRICE
AQUIS 500 CR	Conductivity Tx/Controller, 1 x Analogue output, 20~30Vac/dc.	\$1390.00
AQUIS 500 CR-2A	Conductivity Tx/Controller, 2 x Analogue outputs, 1 Relay, 20~30Vac/dc	\$1850.00

BlackLine CR-EC

2-Electrode Conductivity Sensors



CR-EC

Compact construction.
 Integrated Pt1000 (standard).
 Screw connection G 1/2.
 Electrical connection: 5m Fixed Cable.
 Fitting length: 40mm (CR-EC-0.10 & CR-EC-1.00) 60mm (CR-EC-0.01).
 Suitable for pure and high purity water applications.
 JUMO Datasheet: 20.2922

www.intech.co.nz/cr-ec

MODEL	DESCRIPTION	PRICE
CR-EC-0.01	Conductive 2-electrode conductivity sensor, K=0.01, 63mm, CrNi.	\$510.00
CR-EC-0.10	Conductive 2-electrode conductivity sensor, K=0.10, 40mm, CrNi.	\$380.00
CR-EC-1.00	Conductive 2-electrode conductivity sensor, K=1.00, 40mm, Titanium.	\$440.00

dTRANS T01 Two-Wire Temperature Transmitter



dTRANS T01-B

Available for In-Head or DIN-rail mounting.
 RTD temperature probes and thermocouples.
 Galvanically isolated input and output.
 Output two-wire 4 to 20 mA, HART® interface (Not available in dTRANS T01-Junior).
 Customized linearization.
 JUMO Datasheet: 70.7010

www.intech.co.nz/t01

MODEL	DESCRIPTION	PRICE
T01-T	DIN Rail Programmable Transmitter with HART.	\$650.00
T01-B	In-Head Programmable Transmitter with HART.	\$610.00
T01-B-Ex	In-Head Programmable Transmitter with HART + Ex protection.	\$520.00
T01-Junior	In-Head Isolated Transmitter.	\$288.00
OPTIONS		
Foot	DIN Rail mounting element.	\$24.00
Cable	PC Interface with converter USB/TTL (P/N: 00456352).	\$298.00
SAT-304	HART Modem.	\$395.00
Software	Software - Setup program dTRANS T01 (P/N: 00378733).	\$135.00



dTRANS T01-T



Temperature Limiter/Monitor - TB/TW

JUMO

Features:

- ◆ Design width 22.5mm.
- ◆ Installation on a top hat rail 35mm.
- ◆ Approval as per DIN EN 14 597, cULus
- ◆ Universal measuring input (also standard signal)
- ◆ 2x Pt100 for differential value measurement
- ◆ Alphanumerical LCD display.
- ◆ Limiter or monitor configurable.
- ◆ Temperature monitoring up to max. 2,495°C.
- ◆ Pre-alarm absolute or as the offset to the limit value.

- ◆ Internal and external reset possible
- ◆ Advanced configuration with optional setup program
- ◆ JUMO Datasheet; 70.1160

Applications:

- Monitoring and limiting temperatures, pressure and other process variables, e.g.:
- ◆ Protection of burner control systems.
 - ◆ Monitoring of heating elements.
 - ◆ Protection of thermal oil systems.
 - ◆ Protection of boiler plants.



TB/TW

www.intech.co.nz/tb-tw

MODEL	DESCRIPTION	PRICE
TB/TW	Temperature limiter/monitor, Pt100, 110~240V.	\$752.00
TB/TW-LV	Temperature limiter/monitor, Pt100, 20~30Vac/dc.	\$752.00
OPTIONS		
Cable	PC Interface with converter USB/TTL (P/N: 00456352).	\$298.00
Software	Setup Software and Interface cable for advanced configuration (P/N: 00514193).	POA

Safety Temperature Limiter/Monitor - safetyM STB/STW - SIL and PL approved

Features:

- ◆ SIL and PL approvals.
- ◆ Can be configured as safety temperature limiter (STB) or safety temperature monitor (STW).
- ◆ LCD display with background lighting and plain text display.
- ◆ Setup program available for configuration and archiving via USB interface. (USB Mini-B connector.)
- ◆ Two relay outputs can be used as pre-alarm or limit value alarm.
- ◆ Measuring input: 2 x Pt100 3-wire.
- ◆ Analogue Output (4~20mA).
- ◆ JUMO Datasheet: 70.1150



STB/STW

www.intech.co.nz/safetym

MODEL	DESCRIPTION	PRICE
STB/STW-HV	Safety Temperature Limiter/Monitor, 110~240Vac.	\$1100.00
STB/STW-LV	Safety Temperature Limiter/Monitor, 20~30Vac/dc.	\$1100.00
OPTIONS		
Software	Software - Setup program STB/STW (P/N: 00548742).	\$168.00

Digital Thermostat - eTRON T

Features:

- ◆ Heating or cooling is configurable.
- ◆ Limit monitoring.
- ◆ Available for RTD or Thermocouple input (mA or V available on special request):
RTD, Pt100 & Pt1000: -200~600°C.
Thermocouple, Types K, J, L: -200~999°C.
- ◆ 10A relay (changeover contact).
- ◆ Adjustable switching hysteresis.
- ◆ Simple, space saving installation.
- ◆ Protection: IP20.
- ◆ Time-delayed switch-on after power-on is selectable, e.g. for staggered starting of several equipment units.
- ◆ 3-digit LCD display with special characters for °C and °F.
- ◆ Parameter level protected by code.
- ◆ Operating position: Unrestricted.
- ◆ Temperature: Ambient, 0~55°C.
- ◆ Span: Min span is 10% of range.
- ◆ JUMO Datasheet: 70.1050



eTRON T

www.intech.co.nz/etron

MODEL	DESCRIPTION	PRICE
701050/811-02	eTRON T Digital thermostat, Pt100 Input, 230Vac.	\$340.00
701050/811-31	eTRON T Digital thermostat, Pt100 Input, 12~24Vdc/ac.	\$340.00
701050/821-02	eTRON T Digital thermostat, Thermocouple Input, 230Vac.	\$340.00
701050/821-05	eTRON T Digital thermostat, Thermocouple Input, 115Vac.	\$340.00
701050/821-31	eTRON T Digital thermostat, Thermocouple Input, 12~24Vdc/ac.	\$340.00



Midas S05

P30-504

P30-571

Bar
-1~1.5
-1~5 *
-1~9
-1~15 *
-1~24 *
0~1
0~1.6 *
0~2.5
0~4
0~6
0~10 *
0~16 *
0~25 *
0~40
0~60

Bar
-1~0
-1~1
-1~1.5
-1~5
-1~9
0~0.25
0~0.4
0~0.6
0~4
0~1
0~6
0~10
0~16
0~25
0~60
0~100
0~160
0~250
0~400
0~600
0~0.6 absolute
0~1 absolute

Bar
-1~0
-1~9
0~0.1
0~0.25
0~0.4
0~0.6
0~1
0~4
0~6
0~10
0~16
0~25



P30-613

Bar
0~0.25 *
0~0.4 *
0~0.6 *
0~1 *
0~4 *
0~6 *
0~10 *



Midas SI

Bar
0~0.25
0~0.4
0~0.6



Midas C08

Bar
0~10
0~16



Midas H20 HP

Bar
0~100
0~250
0~400
0~600

LR1011



LR1011 shown with P30-504

Pressure Transmitters

MIDAS

www.intech.co.nz/midas

MODEL	DESCRIPTION	PRICE
Midas S05	Pressure transmitter. 2 wire, loop powered. Protection: IP65. Process connection: 1/4" BSP. Wetted parts: Stainless steel. Mounting position: Unrestricted. Temperature: Medium, -30~125°C. Ambient, -20~125°C. Output: 4~20mA. 2 wire, loop powered. U _T = 10~30Vdc. Load resistance: R _L = (U _S -10V) / 0.02A. max. Range: Ranges in gauge pressure: from -1~1.5 bar to -1~24 bar. and from 0~1.0 bar to 0~60 bar. * Ranges also available with M12 x 1 connection (includes cable) (Specify when ordering). JUMO Datasheet: 40.1010	\$398.00
Midas SI	Range: from 0~0.25 bar to 0~0.6 bar. Features as above. JUMO Datasheet: 40.1006	\$418.00
Midas H20 HP	High pressure version of Midas S05 / SI - as above except: Range: from 0~100 to 0~600 bar. JUMO Datasheet: 40.1020	\$498.00
Midas C08	For Water use Only! Range: 0~10 bar & 0~16 bar JUMO Datasheet: 40.1002	\$346.00

ACCESORIES

00409334	Cable, angled, M12x1, 2m PVC.	\$30.00
Midas 1/4" BSP Adaptor	Fittings: Adaptor to 1/4" BSP taper c/w Teflon Crush Washer.	\$38.00
Midas 1/4" NPT Adaptor	Adaptor to 1/4" NPT taper c/w Teflon Crush Washer.	\$38.00

dTRANS P30

www.intech.co.nz/p30

P30-504 P30-571 P30-613	Pressure transmitter. 2 wire, loop powered. Protection: IP65. Wetted parts: Stainless steel. Mounting position: Unrestricted. Temperature: Medium, -30~120°C. Ambient, -20~100°C. Output: 4~20mA. 2 wire, loop powered. U _T = 10~30Vdc. Load resistance: R _L = (U _S -10V) / 0.02A. max. Range: Ranges in gauge pressure: from -1~0 bar to -1~9 bar. and from 0~0.25bar to 0~600bar. Also some ranges in absolute pressure are available. JUMO Datasheet: 40.4366 Standard: Process connection: 1/2" BSP. Flush diaphragm: Process connection: 3/4" BSP. Sanitary: Process connection: 1 1/2" triclover. * Ranges also available with M12 x 1 connection (includes cable) (Specify when ordering).	\$965.00 \$998.00 \$1055.00
--	---	-----------------------------------

ACCESORIES

00512341	Cable, straight, M12x1, 5m PVC.	\$70.00
P30 1/2" Adaptor	Fittings: Adaptor to 1/2" BSP taper c/w Teflon Crush Washer.	\$60.00

OPTION

LR011	Plug in Display. Loop Powered. Input: 4~20mA, 2 wire. Display: 4-digit: 7.6mm height. Housing: Plastic. Protection: IP65.	\$250.00
--------------	--	----------

LCD Pressure Switch

- ◆ Linearity 0.1%.
- ◆ Measuring range scaling 1:4.
- ◆ Two-colour display with alarm function.
- ◆ Analogue output can be freely configured mA or V.
- ◆ Span 25~100% of nominal range.
- ◆ 100°C medium temperature.
- ◆ Programming is either local or via set-up.
- ◆ JUMO Datasheet: 40.5052

JUMO



DELOS SI

www.intech.co.nz/delossi

MODEL	DESCRIPTION	PRICE
DELOS SI	Precision pressure transmitter with switching contacts and display. Input Ranges: -1/9bar, 0~1bar, 0~4bar, 0~10bar, 0~25bar (specify). Other ranges available on request. Power supply: 12~30Vdc. Protection: IP67. Cable: Angled socket M12x1 with 2m PVC cable (included). P/N: 00409334 Output: 1x PNP output 1x 0(4)~20mA or 0~10Vdc selectable.	\$780.00
OPTIONS (if required)		
Software	DELOS SI setup program (<i>requires Programming Kit below to connect with PC</i>). (P/N:00522384).	\$110.00 Nett
Programming Kit	PC interface cable including USB/TTL converter and adapter (P/N: 00456352) <u>AND</u> Connecting cable (Y cable) (P/N: 00507861)	\$340.00 Nett

Differential Pressure Transmitters

MODEL	DESCRIPTION	PRICE
402005-441 402005-442	Dry non-corrosive gases. Range: 0~100mm adjustable. Range: 0~1000mm adjustable. Supply voltage: 14~38Vdc / 12~31Vac. Output: 3 wire 0(4)~20mA or 0~10Vdc, selectable. JUMO Datasheet: 40.2005 www.intech.co.nz/402005	\$410.00 \$410.00
402005-LCD	LCD Display optional extra for above.	\$192.00
404304	Dry non-corrosive gases. 2 wire, 4~20mA. Range (specify): 0~2.5mbar, 0~5mbar, 0~600mbar, 0~1bar, 0~1mbar (add \$110). Other ranges available on request. Supply voltage: 24Vdc, loop powered. JUMO Datasheet: 40.4304 www.intech.co.nz/404304	\$609.00



402005 with LCD



404304

For additional Differential Pressure Transmitters available refer to page 13 >>

Midas DP10	This differential pressure transmitter measures the pressure in liquid and gaseous media. The difference between the two pressures is converted into an analogue output signal. The piezo-resistive silicon sensor is built into a stainless steel housing. Output: 4~20mA, 2 wire. Supply voltage: 10~30Vdc (for 4~20 mA output). Operating temperature: Ambient -20~80°C. Medium -15~100°C. Storage -50~100°C. Cable: Angled socket M12x1 with 2m PVC cable (included). P/N: 00409334 Mounting bracket: Angled or straight (included) (specify). JUMO Datasheet: 40.1050 www.intech.co.nz/midasdp10	
-------------------	--	--



Midas DP10

MODEL	DESCRIPTION	PRICE
401050-453	Midas DP10 0~0.6bar Overall error (% of full scale): ≤2.5%	\$712.00
401050-455	Midas DP10 0~1.6bar Overall error (% of full scale): ≤2.0%	\$712.00
401050-457	Midas DP10 0~4bar Overall error (% of full scale): ≤1.8%	\$712.00
401050-458	Midas DP10 0~6bar Overall error (% of full scale): ≤1.8%	\$712.00
401050-459	Midas DP10 0~10bar Overall error (% of full scale): ≤1.5%	\$712.00

Level Transmitters

JUMO

JUMO Maera S28 (404392)

Integrated overvoltage protection. Also 404391/000.

Housing: 192mm x ø25mm, stainless steel.
 Protection: IP68. EN60529 to 100m.
 Cable: polyurethane Ø 9mm.
 Accuracy: on full scale, < 0.5% min @ 20°C.
 Operating temp: 0~50°C.
 Temp coefficient: ±0.2% / 10°C.
 Output: 4~20mA, 2 wire, loop powered. $U_T = 10\sim30Vdc$.
 Load resistance: max. $R_L < (U_S - 10V) / 0.02A$.
 JUMO Datasheet: 40.4392

www.intech.co.nz/maera

Features:

- ◆ Two wire 4~20mA submersible transmitter.
- ◆ 3x Overpressure - up to 40 bar.
- ◆ Surge and Reverse polarity protection.
- ◆ Integrated OVP (lightning) protection (404392 & 404391/000).
- ◆ Other ranges and cable lengths are available on request.



404392 404391/000 404391/022

MODEL	DESCRIPTION	PRICE
404392-451	Level probe 0~2.5 metres H ₂ O with 10 metres of cable.	\$1030.00
404392-452	Level probe 0~4 metre H ₂ O with 10 metres of cable.	\$1030.00
404392-453	Level probe 0~6 metres H ₂ O with 10 metres of cable.	\$1030.00
404392-454	Level probe 0~10 metres H ₂ O with 15 metres of cable.	\$1125.00
404392-456	Level probe 0~25 metres H ₂ O with 30 metres of cable.	\$1390.00
404392-457	Level probe 0~40 metres H ₂ O with 50 metres of cable.	\$2190.00

Level probe for liquids - Critical Applications.

JUMO Maera F27 (404391)

Housing: Stainless steel (404391/000) ø41mm x 120mm / Integrated OVP.
 Plastic PTFE (404391/022) ø50mm x 91mm
 Protection: IP68. EN60529 to 16m.
 Cable: FEP Ø 9mm.
 Accuracy: on full scale, < 0.4% min @ 20°C.
 Operating temp: -20~60°C.
 Temp coefficient: ±0.2% / 10°C.
 Output: 4~20mA, 2 wire, loop powered. $U_T = 12\sim30Vdc$.
 Load resistance: max. $R_L < (U_S - 12V) / 0.02A$.
 JUMO Datasheet: 40.4391

www.intech.co.nz/maera

Note: A close proximity or direct lightning strike may compromise the OVP protection.

MODEL	DESCRIPTION	PRICE
404391/000-414-5	Level probe 0~1 metre H ₂ O with 5 metres of cable, SS.	\$1275.00
404391/000-414-10	Level probe 0~1 metre H ₂ O with 10 metres of cable, SS.	\$1415.00
404391/022-414	Level probe 0~1 metre H ₂ O with 10 metres of cable, PTFE.	\$1785.00
404391/022-452	Level probe 0~4 metres H ₂ O with 10 metres of cable, PTFE.	\$2165.00

Common Accessories for Level transmitters.

MODEL	DESCRIPTION	PRICE
NAA-101	Terminal Box with filter. Protection: IP65. Size: 93 x 93mm.	\$75.00
NAA-102	Terminal Box with filter and integral OVP. Protection: IP65. Size: 93 x 93mm. Overvoltage protection: Voltage clipping: slow - 90 Vpp, fast - 33 Vpp. Line resistance: 13 ohm. Max rating: 600 W / 1ms.	\$275.00
NAA-209	Hanging Cable Clamp.	\$32.00
LPN-OVP (Rev 1)	DIN Rail mount OVP unit. www.intech.co.nz/lpn-ovp Leakage Current: 10µA @ 24Vdc. Transient cut-off voltage: 33V. Added line resistance: 4 ohms for the loop.	\$115.00

Level probe for liquids - Small Diameter.

Stainless Steel Submersible Level Transmitter.

Housing: 132mm x ø17mm, stainless steel.
 Protection: IP68.
 Cable: polyurethane Ø7.4mm.
 Accuracy: on full scale, ±0.5%.
 Operating temp: -10~70°C.
 Temp drift: ≤±0.2% / 10°C.
 Output: 4~20mA, 2 wire, loop powered.
 $VS = 12\sim36Vdc$.
 Load resistance: $R_{max} = [(VS - VS_{min}) / 0.02] \Omega$.

www.intech.co.nz/lmk306



LMK-306

MODEL	DESCRIPTION	PRICE
LMK-306-50	Level Probe 0~50 metres H ₂ O with 60 metres of cable.	\$2195.00
LMK-306-100	Level Probe 0~100 metres H ₂ O with 110 metres of cable.	\$2910.00

BD SENSORS